

Sea Rig

Yacht Rigging Systems



PRODUCT CATALOGUE 2008

Welcome to the 2008 SeaRig catalogue

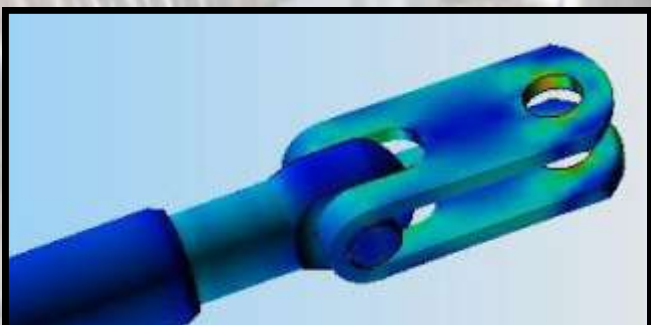
Based in Auckland, New Zealand, SeaRig is a leading supplier of marine and commercial rigging systems. Our global reputation for quality, timely delivery, and service positions us as a preferred partner for many of the markets leading sparmakers and riggers.

We operate a production and custom team in the one facility, utilising CNC & manual machining technology. We make unique one off components or volume production from a range of materials include 316 S/s - round bar and plate, 17-4ph, Titanium 6AL4V Grade5, Alloy, Bronze and Plastics.

A dedicated design and engineering team filters through to a strong product development program. The use of CAD/CAM in design and Finite Element Analysis (FEA), allows us to quickly and innovatively develop products of high technology, for projects as diverse as VOR, Americas Cup, SuperMaxi, and Superyacht classes.

As a supplier of choice to all competing yachts in this years Volvo Ocean Race, SeaRig technology remains proven by the harshest elements, making it a safer product that you can rely on for whichever situation you choose to put it.

We welcome you to join us at our facility or visit us online at www.searig.co.nz



SWAGE 2

SWAGELESS 6

ROD 9

RIGGING SCREW 12

INSULATOR 17

INTERNAL THREAD 21

STEMBALL 22

MAST TANG BASE 23

TOGGLE 24

STAY TERMINATION 25

CLEVIS PIN 26

LIFELINE 27

SPINNAKER POLE 28

CODE ZERO 30

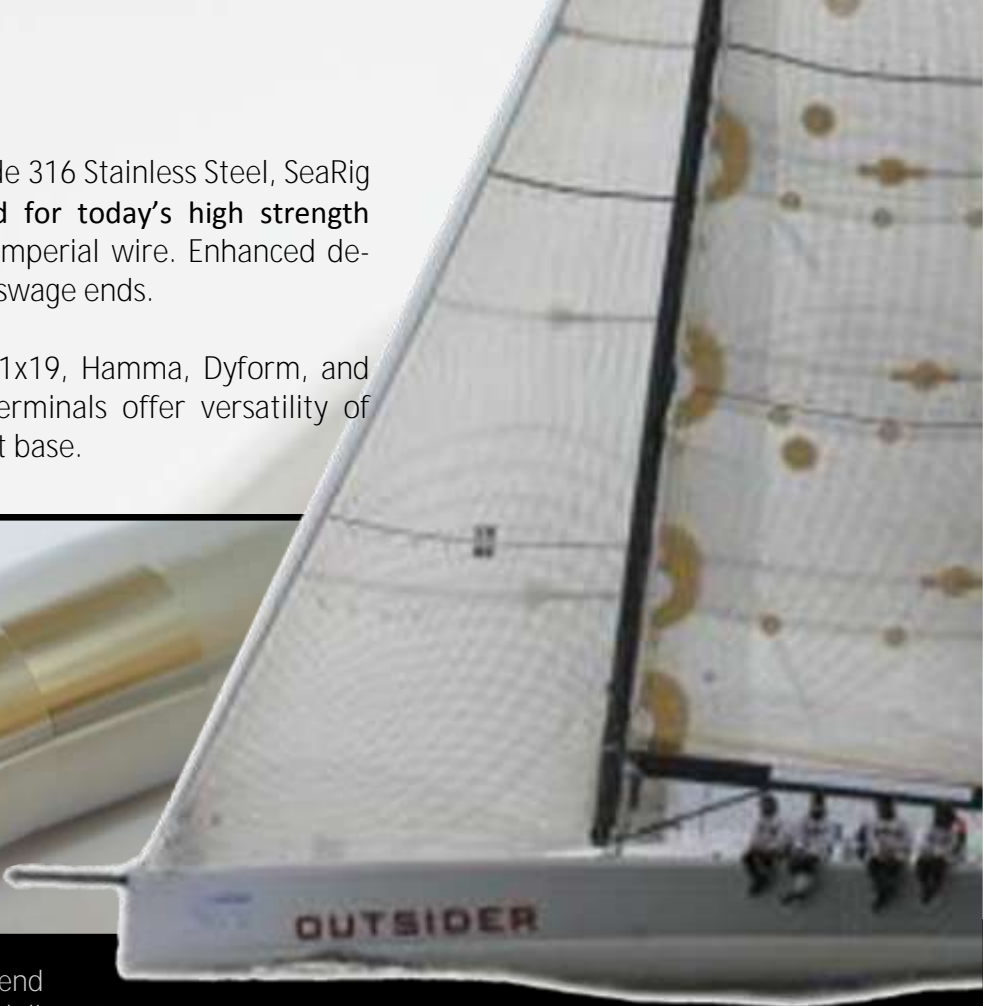
Swage Fittings

Machined from the highest grade 316 Stainless Steel, SeaRig **swage terminals** are optimized for today's high strength wires to suit both metric and imperial wire. Enhanced design features reduce fatigue on swage ends.

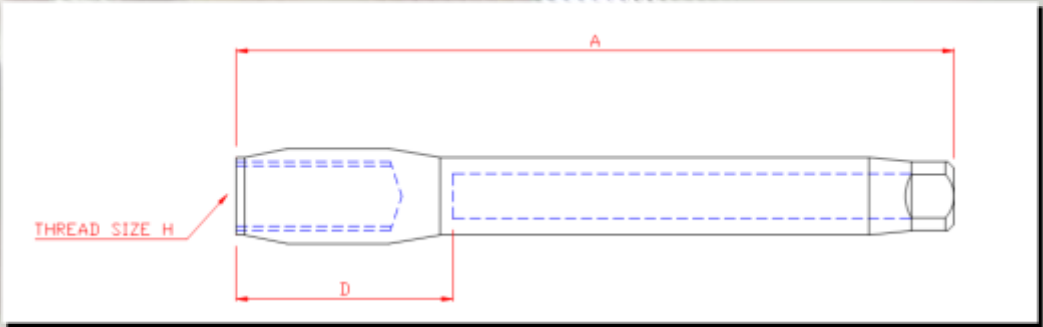
Designed to suit conventional 1x19, Hamma, Dyform, and flexible wires, SeaRig swage terminals offer versatility of configuration in a broad product base.



SeaRig innovation: machined swage end diameter indicates ideal after swaged diameter.

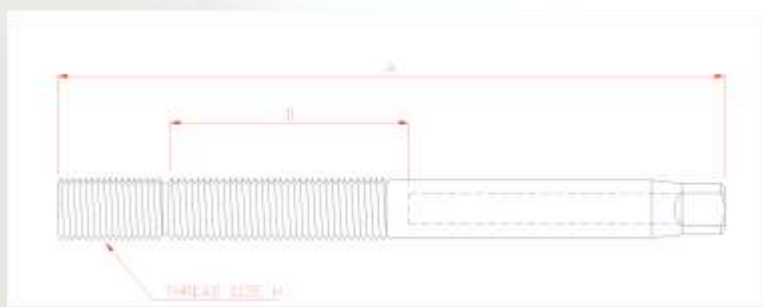


Ball Tang / Insulator



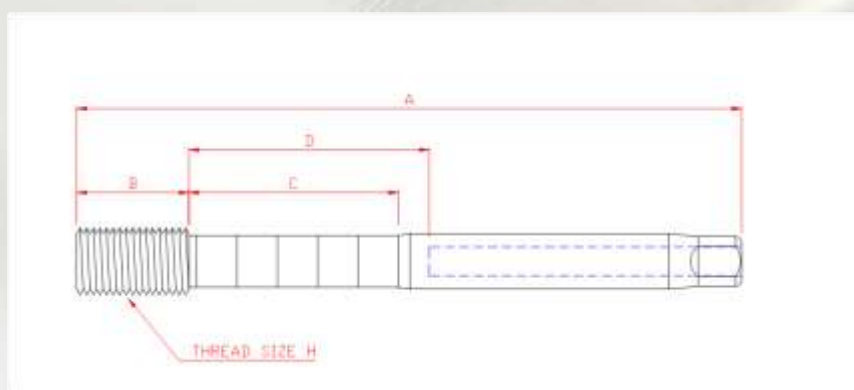
Code	Wire Dia	A (mm)	D (mm)	H (inch)
BTSM04	4mm	110	62	1/2
BTSM05	5mm	110	52	1/2
BTSM06	6mm	122	46	1/2
BTSM07	7mm	132	50	1/2
BTSM08	8mm	142	52	5/8
BTSM09	9mm	169	52	5/8
BTSM10	10mm	169	52	5/8
BTSM11	11mm	200	59	3/4
BTSM12	12mm	225	74	7/8
BTSM14	14mm	230	67	7/8
BTSM16	16mm	281	69	1
BTSM19	19mm	305	66	1 1/4

Stud

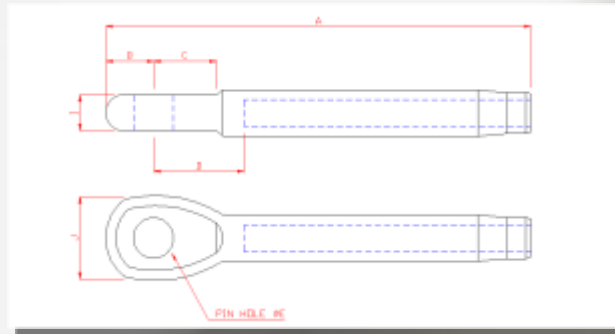


Code	Wire Dia	A (mm)	D (mm)	H (inch)
SM0304	3mm	99	40	1/4
SM0404	4mm	105	40	1/4
SM0506	5mm	122	52	3/8
SM0607	6mm	152	57	7/16
SM0608	6mm	152	57	1/2
SM0708	7mm	165	63	1/2
SM0808	8mm	172	64	1/2
SM0810	8mm	198	77	5/8
SM0910	9mm	220	70	5/8
SM1010	10mm	220	70	5/8
SM1012	10mm	235	75	3/4
SM1112	11mm	258	81	3/4
SM1214	12mm	292	92	7/8
SM1414	14mm	300	95	7/8
SM1616	16mm	370	113	1
SM1920	19mm	405	115	1 1/4

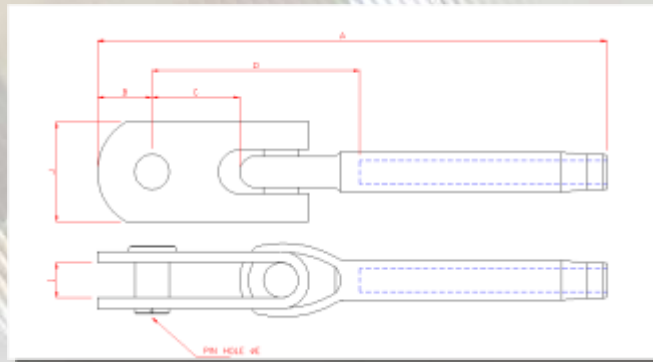
SR87 Series Stud (Old Style)



Code	Wire Dia	A (mm)	B (mm)	C (mm)	D (mm)	H (inch)
45SM03	3mm	66	16	4	4	3/8" UNF
45SM04	4mm	74	16	8	8	3/8" UNF
60SM05	5mm	125	20	43	48	7/16" UNF
78SM06	6mm	150	25	44	48	9/16" UNF
910SM07	7mm	180	33	54	62	18mm
910SM08	8mm	183	31	58	61	18mm
120SM09	9mm	235	35	80	84	20mm
120SM10	10mm	235	35	80	84	20mm
140SM11	11mm	260	32	75	86	20mm
1416SM12	12mm	270	47	80	71	1" UNF
1416SM14	14mm	310	48	86	97	1" UNF
1820SM16	16mm	285	50	25	25	1.26" UNF

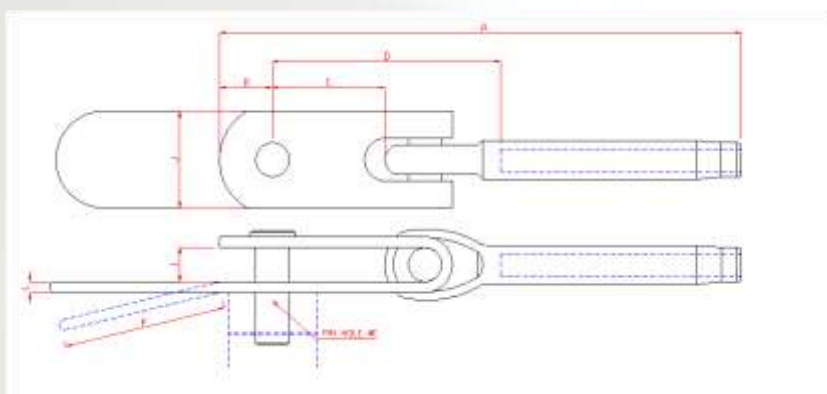


Code	Wire dia	A (mm)	B (mm)	C (mm)	D (mm)	E (inch)	I (mm)	J (mm)
EM0304	3mm	68	8	9	15	1/4	5	12
EM0404	4mm	72	8	11	15	1/4	6	15
EM0405	4mm	73	8	12	15	5/16	6	14
EM0505	5mm	92	11	17	23	5/16	8	19
EM0506	5mm	92	11	17	23	3/8	8	19
EM0607	6mm	113	14	19	22	7/16	10	24
EM0608	6mm	114	14	19	23	1/2	10	24
EM0708	7mm	121	14	18	22	1/2	12	25
EM0808	8mm	134	17	24	27	1/2	13	29
EM0810	8mm	135	19	21	26	5/8	14	31
EM0910	9mm	162	20	22	26	5/8	14	34
EM1010	10mm	162	20	22	26	5/8	14	33
EM1012	10mm	169	27	20	25	3/4	14	36
EM1112	11mm	210	22	28	47	3/4	15	39
EM1212	12mm	225	27	29	46	3/4	19	46
EM1214	12mm	225	27	30	45	7/8	19	46
EM1414	14mm	242	27	34	52	7/8	22	49
EM1616	16mm	299	37	43	50	1	26	58
EM1920	19mm	310	37	42	48	1 1/4	32	62
EM2220	22mm	390	40	49	92	1 1/4	38	80



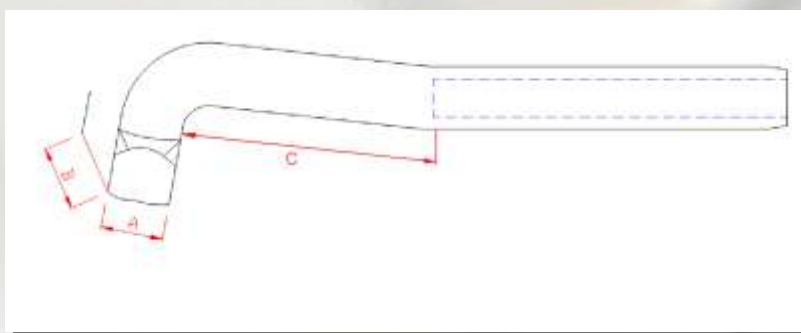
Code	Wire dia	A	B	C	D	E	I	J
TEM0304	3mm	105	12	25	45	1/4	1/4	19
TEM0404	4mm	105	12	25	45	1/4	1/4	19
TEM0405	4mm	105	12	25	45	5/16	1/4	19
TEM0505	5mm	125	13	20	55	5/16	5/16	22
TEM0506	5mm	125	13	20	55	3/8	5/16	22
TEM0607	6mm	160	16	30	70	7/16	7/16	32
TEM0608	6mm	160	16	30	70	1/2	7/16	32
TEM0708	7mm	170	20	30	70	1/2	1/2	38
TEM0808	8mm	185	20	28	72	1/2	1/2	38
TEM0810	8mm	185	20	28	72	5/8	1/2	38
TEM0910	9mm	235	25	50	95	5/8	5/8	45
TEM1010	10mm	235	25	50	95	5/8	5/8	45
TEM1012	10mm	235	25	50	95	3/4	5/8	45
TEM1112	11mm	270	25	45	100	3/4	3/4	45
TEM1212	12mm	305	30	50	112	3/4	3/4	55
TEM1214	12mm	305	30	50	112	7/8	7/8	55
TEM1414	14mm	320	30	50	112	7/8	7/8	55
TEM1616	16mm	400	40	70	150	1"	1"	70
TEM1920	19mm	425	45	65	150	1 1/4	1 1/4	80

Extended Toggle



Code	Wire Dia	A (mm)	B (mm)	C (mm)	D (mm)	E (inch)	I (inch)	J (mm)	L (mm)	P (mm)
TEXM0506	5mm	125	12	20	55	3/8	5/16	23	3	50
TEXM0607	6mm	160	16	32	67	7/16	7/16	32	3	40
TEXM0708	7mm	175	20	32	71	1/2	1/2	38	4	80
TEXM0808	8mm	185	20	28	75	1/2	1/2	38	4	80
TEXM0910	9mm	245	25	50	105	5/8	5/8	45	5	80
TEXM1010	10mm	245	25	50	104	5/8	5/8	45	5	80
TEXM1112	11mm	245	25	45	110	3/4	3/4	45	6	80
TEXM1214	12mm	305	33	50	115	7/8	7/8	55	6	100
TEXM1414	14mm	320	33	50	130	7/8	7/8	55	8	100
TEXM1616	16mm	400	40	70	150	1'	1'	70	10	120

T-Bar



Code	Wire dia	A (mm)	B (mm)	C (mm)
TBSM03	3mm	9	20	24
TBSM04	4mm	9	20	24
TBSM05	5mm	11	22	36
TBSM06	6mm	14	30	36
TBSM07	7mm	14	30	60
TBSM08	8mm	18	32	60
TBSM09	9mm	18	32	70
TBSM10	10mm	18	32	70

Swageless

SeaRig swageless fittings offer an alternative to conventional swage terminals. Their ease of assembly and unique features makes them ideal for emergency repairs at sea or a do it yourself rigging installation.

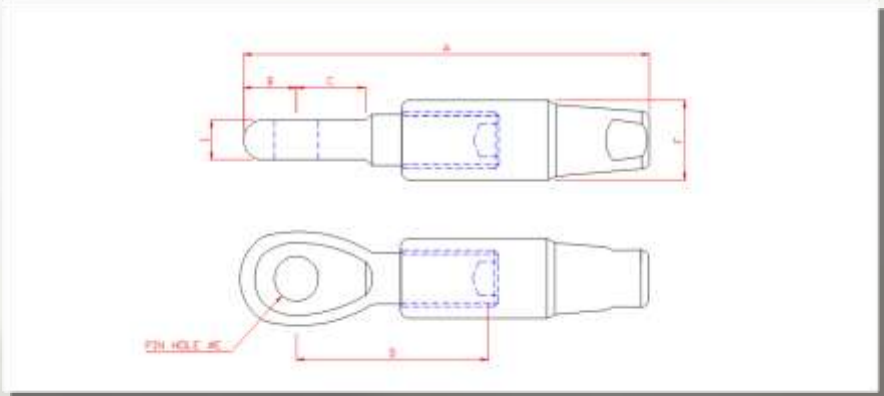
Designed for use on conventional 1x19, Hamma or Dyform wire, the termination, when complete, is stronger than the wire.

The swageless body can be adapted to most fittings when combined with an adaptor (with UNF threads).



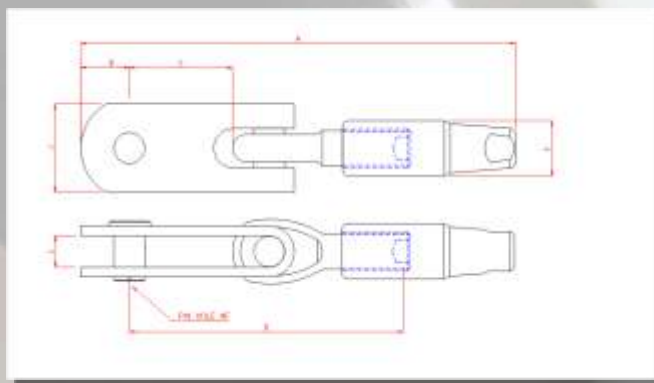
Swageless fittings are produced with high quality materials and craftsmanship to ensure optimum performance.

Eye



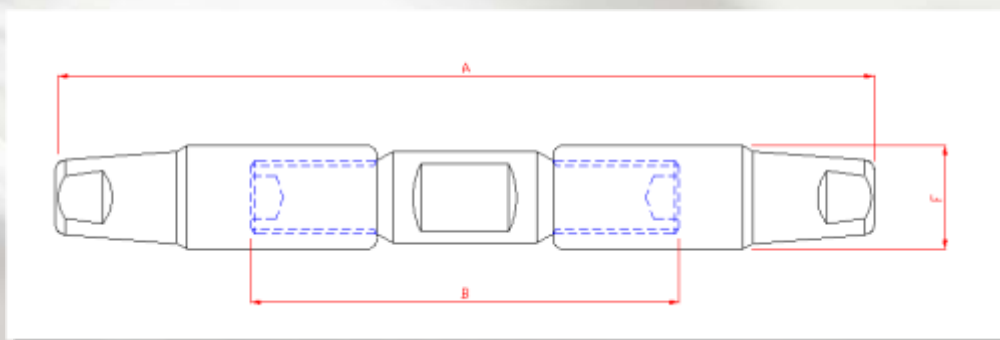
Code	Wire Dia	A (mm)	B (mm)	C (mm)	D (mm)	E (inch)	F (mm)	I (mm)
SLEM05	5mm	105	14	22	54	3/8	20	10
SLEM06	6mm	105	14	22	54	7/16	20	10
SLEM07	7mm	115	16	21	53	1/2	24	13
SLEM08	8mm	115	16	21	53	1/2	24	13
SLEM09	9mm	135	20	24	64	5/8	28	14
SLEM10	10mm	135	20	24	64	5/8	28	14
SLEM11	11mm	145	20	25	64	3/4	28	15
SLEM12	12mm	175	25	33	87	3/4	35	19
SLEM14	14mm	205	25	31	95	7/8	38	22
SLEM16	16mm	225	30	29	100	1	48	25

Toggle



Code	Wire Dia	A (mm)	B (mm)	C (mm)	D (mm)	E (inch)	F (mm)	I (inch)	J (mm)
SLTEM05	5mm	134	12.7	16	84	3/8	20	3/8	23
SLTEM06	6mm	150	16	30	105	7/16	20	7/16	32
SLTEM07	7mm	160	20	30	120	1/2	24	1/2	38
SLTEM08	8mm	160	20	60	120	1/2	24	1/2	38
SLTEM09	9mm	210	25	50	135	5/8	28	5/8	45
SLTEM10	10mm	210	25	50	135	5/8	28	5/8	45
SLTEM11	11mm	220	25	43	135	3/4	28	3/4	45
SLTEM12	12mm	260	32	52	170	7/8	35	7/8	55
SLTEM14	14mm	285	32	52	178	7/8	38	7/8	55
SLTEM16	16mm	342	41	76	206	1	48	1	70

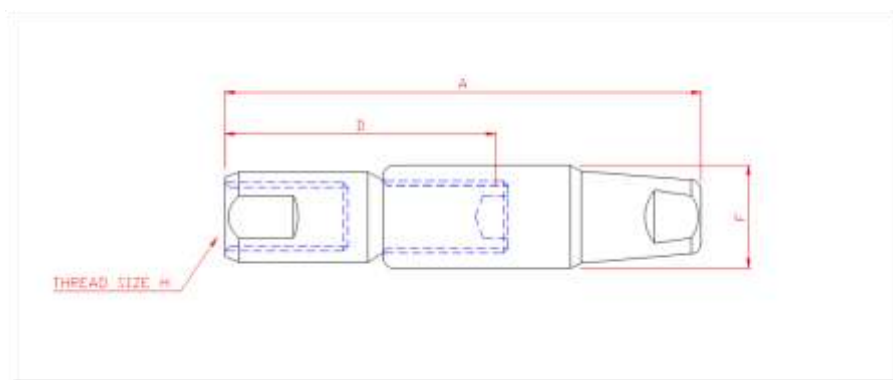
Joiner



Code	Wire Dia	A (mm)	B (mm)	F (mm)
SLSLM06	6mm	150	80	20
SLSLM07	7mm	167	90	24
SLSLM08	8mm	167	90	24
SLSLM09	9mm	207	110	28
SLSLM10	10mm	207	110	28
SLSLM11	11mm	228	110	28
SLSLM12	12mm	255	130	35
SLSLM14	14mm	275	130	38

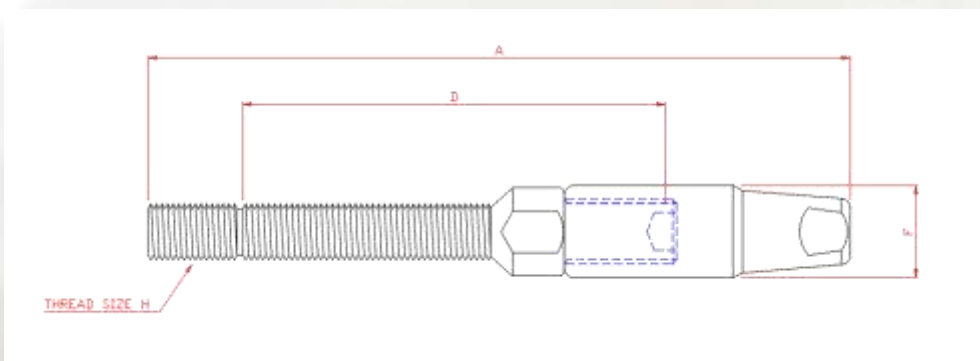
Ideal for repairs to a broken stay at sea or joining wire

Adaptor



Code	Wire Dia	A (mm)	D (mm)	F (mm)	H (inch)
SLAD06	6mm	98	63	20	1/2 unf
SLAD07	7mm	105	63	24	1/2 unf
SLAD08	8mm	105	65	24	5/8 unf
SLAD09	9mm	127	77	28	5/8 unf
SLAD10	10mm	127	77	28	5/8 unf
SLAD11	11mm	138	77	28	3/4 unf
SLAD12	12mm	157	93	35	7/8 unf
SLAD14	14mm	180	97	38	7/8 unf

Stud

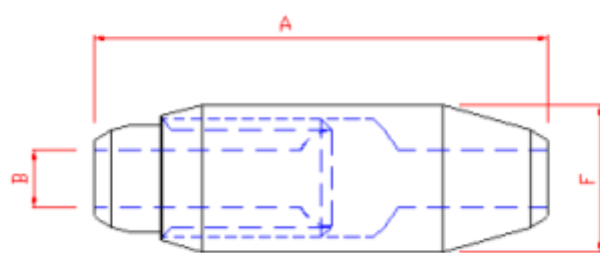


Code	Wire Dia	A (mm)	D (mm)	F (mm)	H (inch)
SLSM05	5mm	135	85	14	3/8 unf
SLSM06	6mm	155	95	20	7/16 unf
SLSM07	7mm	195	127	24	1/2 unf
SLSM08	8mm	195	127	24	1/2 unf
SLSM09	9mm	215	130	28	5/8 unf
SLSM10	10mm	215	130	28	5/8 unf
SLSM11	11mm	225	126	28	3/4 unf
SLSM12	12mm	260	145	35	7/8 unf
SLSM14	14mm	260	140	38	7/8 unf
SLSM16	16mm	330	195	48	1 unf

ROD



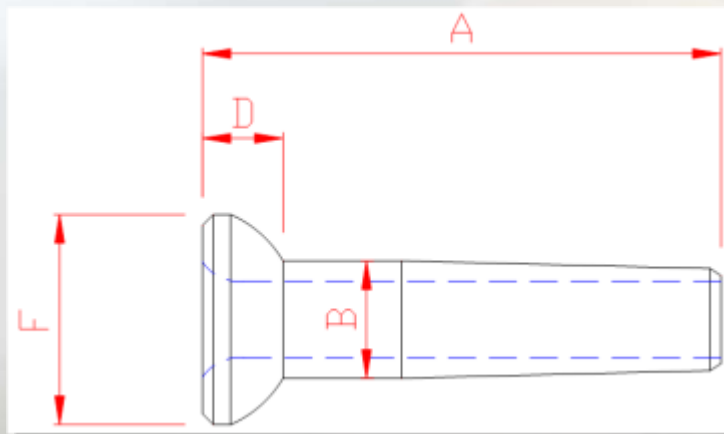
Rod-Rod



Code	Rod	A (mm)	B (mm)	F (mm)
RTR06	-6	51	5.4	15
RTR08	-8	59	6.1	19
RTR10	-10	73	6.4	20
RTR12	-12	73	7.5	22
RTR15	-15	88	7.9	22
RTR17	-17	88	8.8	22
RTR22	-22	88	9.9	28
RTR30	-30	95	11.5	30
RTR40	-40	102	13.1	35
RTR60	-60	152	16.9	43

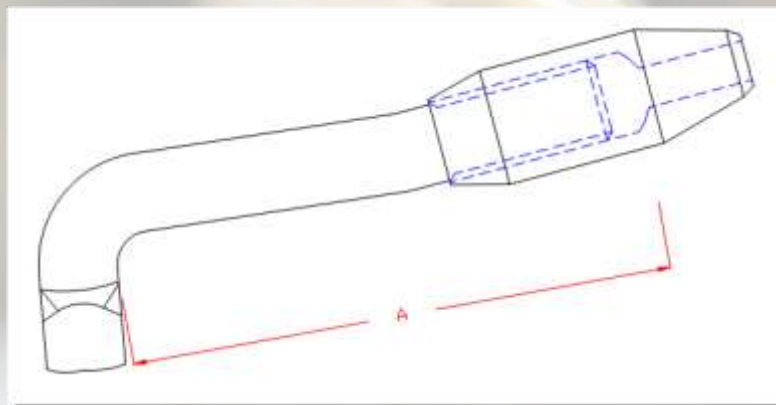
Grand Prix Stem

For use with RTB
(page 23)



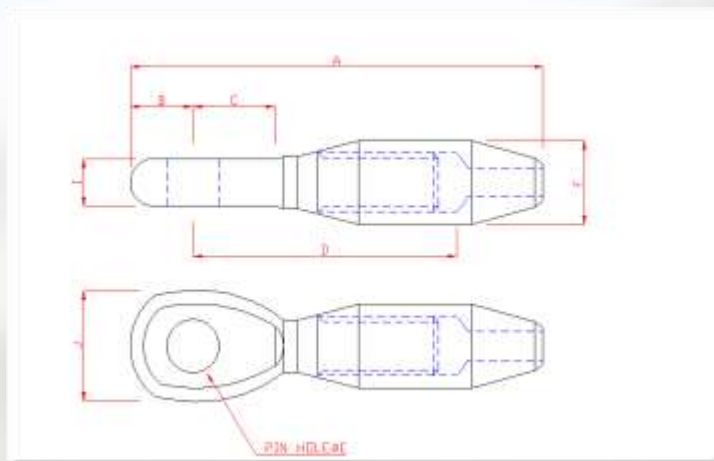
Code	Rod	A (mm)	B (mm)	D (mm)	F (mm)
GPS04	-4	40	11	7	19
GPS06	-6	40	11	7	19
GPS08	-8	40	11	7	19
GPS10	-10	40	11	7	19
GPS12	-12	50	14	10	24
GPS15	-15	50	14	10	24
GPS17	-17	50	14	10	24
GPS22	-22	53	14	13	28
GPS30	-30	74	18	14	32

T-Bar



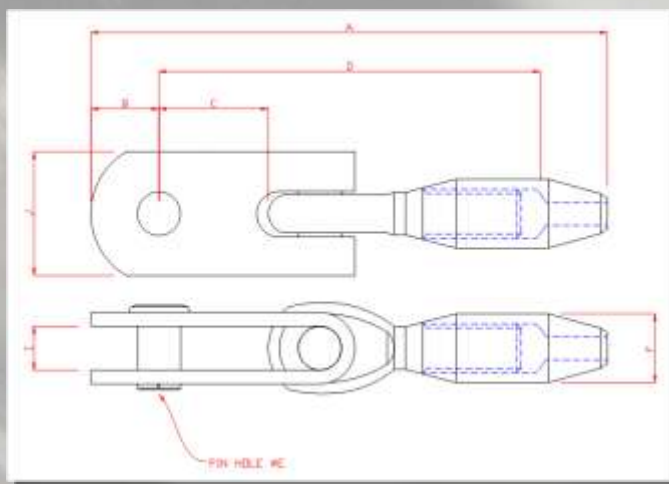
Code	Rod	A (mm)
TBR04	-4	71
TBR06	-6	72
TBR08	-8	88
TBR10	-10	86
TBR12	-12	104
TBR15	-15	101
TBR17	-17	101

Eye



Code	Rod	A (mm)	B (mm)	C (mm)	D (mm)	E (inch)	F (mm)	I (mm)	J (mm)
RE0405	-4	73	10	13	51	5/16	13	8.2	18
RE0607	-6	73	11	13	51	3/8	15	8.2	18
RE0807	-8	92	15	19	58	7/16	19	10	24
RE1008	-10	94	15	20	64	1/2	20	12	29
RE1210	-12	105	17	18	69	5/8	22	13	28
RE1510	-15	113	20	20	89	5/8	22	14	34
RE1710	-17	113	20	20	89	5/8	22	14	34
RE2212	-22	135	20	29	86	3/4	28	15	38
RE3014	-30	157	25	40	100	7/8	30	21	49
RE4016	-40	170	30	45	108	1	35	25	59
RE4816	-48	205	30	45	128	1	36	25	59
RE6020	-60	247	31	38	153	1 1/4	43	32	60

Toggle Eye



Code	Rod	A (mm)	B (mm)	C (mm)	D (mm)	E (inch)	F (mm)	I (inch)	J (mm)
RTE0405	-4	105	12.5	20	72	5/16	13	5/16	23
RTE0606	-6	105	12.5	20	72	3/8	13	3/8	32
RTE0807	-8	140	15	32	115	7/16	20	7/16	32
RTE1008	-10	145	20	30	100	1/2	20	1/2	38
RTE1210	-12	155	20	29	105	5/8	22	5/8	45
RTE1510	-15	190	25	48	130	5/8	22	5/8	45
RTE1710	-17	190	25	48	130	5/8	22	5/8	45
RTE2212	-22	205	26	48	140	3/4	28	3/4	45
RTE3014	-30	240	32	52	165	7/8	30	7/8	55
RTE4016	-40	310	40	70	230	1	35	1	70
RTE4816	-48	310	40	70	230	1	36	1	70
RTE6020	-60	375	45	83	280	1 1/4	43	1 1/4	80

Rigging Screws

SeaRig rigging screws are machined with precision to the highest quality assurance standards from grade 686 bronze. Custom options for length and application are available on request.

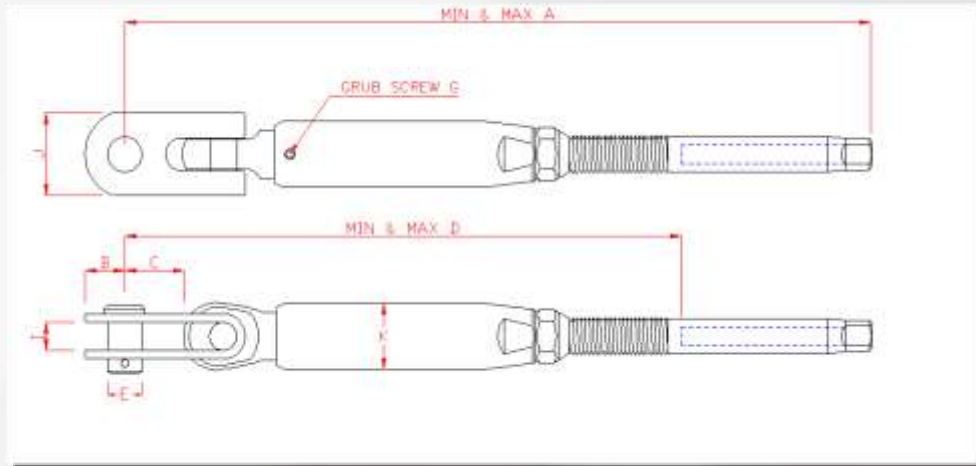
Rigging Screw Strength Guide

Size	Wire dia	BL (kg)
RST04	3mm	3569
RST05	4mm	3569
RST06	5mm	3874
RST07	6mm	4792
RST08	7mm	6934
RST08	8mm	6934
RST10	9mm	12542
RST10	10mm	12542
RST12	11mm	13460
RST14	12mm	18858
RST14	14mm	18858
RST16	16mm	27460



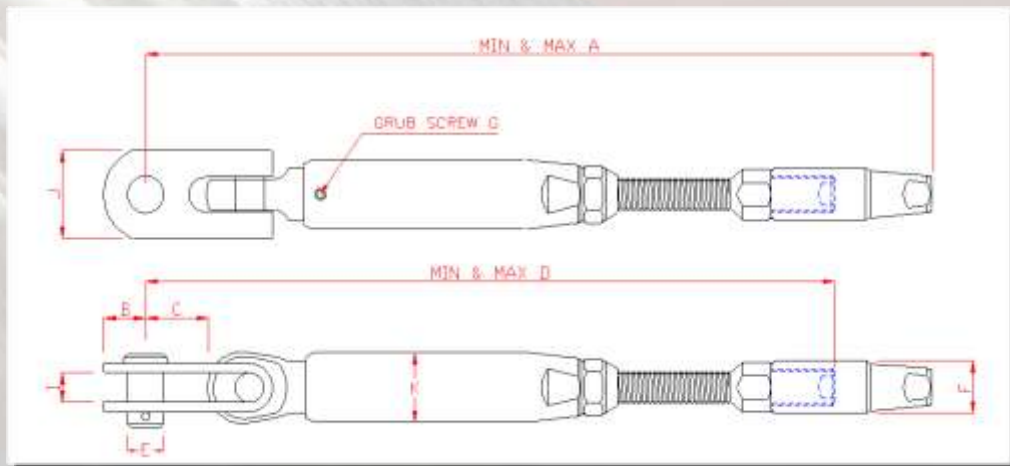
A complete sizing in one range, finished in stain chrome.

Toggle-Swage



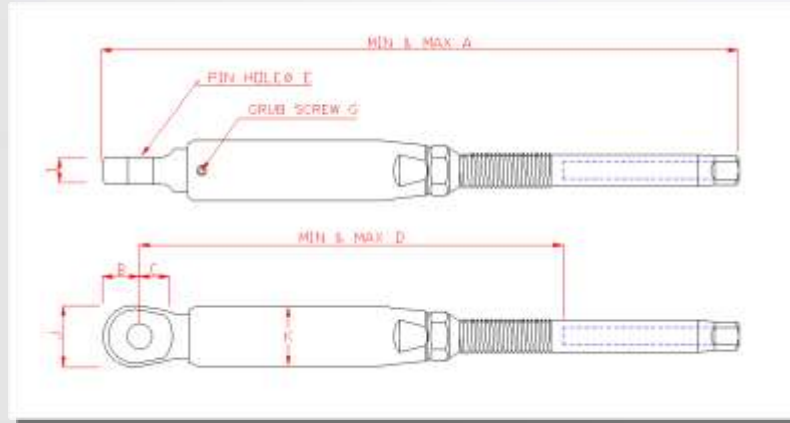
Code	Wire dia	A min (mm)	A max (mm)	B (mm)	C (mm)	D Min (mm)	D Max (mm)	E (inch)	G (mm)	I (mm)	J (mm)	K (mm)
RSTSM0405	4mm	196	271	12	24	147	222	1/4	O-Ring	7	17	17
RSTSM0506	5mm	208	283	16	32	150	225	1/4	O-Ring	7	17	20
RSTSM0607	6mm	250	335	16	34	174	259	7/16	5	10	21	20
RSTSM0708	7mm	283	378	20	28	198	293	1/2	5	15	25	25
RSTSM0808	8mm	293	388	20	28	202	297	1/2	5	15	25	25
RSTSM0810	8mm	369	494	27	47	278	403	5/8	6	20	32	34
RSTSM0910	9mm	389	490	27	47	273	403	5/8	6	20	32	34
RSTSM1010	10mm	389	490	27	47	273	403	5/8	6	20	32	34
RSTSM1012	10mm	400	549	27	47	284	433	3/4	6	20	38	39
RSTSM1112	11mm	436	584	32	52	294	442	3/4	6	20	38	39
RSTSM1214	12mm	474	609	32	52	321	456	7/8	6	24	47	45
RSTSM1414	14mm	480	585	32	52	321	456	7/8	6	24	47	45
RSTSM1616	16mm	550	625	40	73	340	490	1'	6	30	70	50

Toggle-Swageless



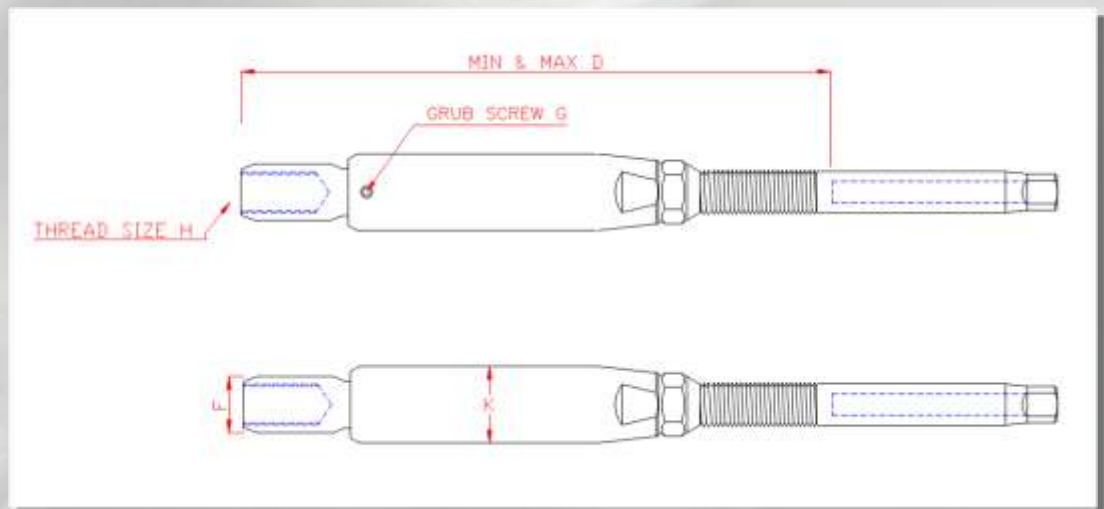
Code	Wire dia	A min (mm)	A max (mm)	B (mm)	C (mm)	D min (mm)	D max (min)	E (inch)	F (mm)	G (mm)	I (mm)	J (mm)	K (mm)
RSTSLM06	6mm	250	330	16	34	217	297	7/16	20	5	10	21	20
RSTSLM07	7mm	260	380	20	28	220	340	1/2	24	5	13	37	25
RSTSLM08	8mm	260	380	20	28	220	340	1/2	24	5	13	37	25
RSTSLM09	9mm	384	514	27	47	337	467	5/8	28	6	20	32	34
RSTSLM10	10mm	384	514	27	47	337	467	5/8	28	6	20	32	34
RSTSLM1012	10mm	394	534	27	47	347	487	3/4	28	6	20	38	39
RSTSLM11	11mm	400	534	32	52	340	476	3/4	28	6	20	38	39
RSTSLM12	12mm	400	520	32	52	340	522	7/8	35	6	24	47	45
RSTSLM14	14mm	420	540	32	52	340	534	7/8	38	6	24	47	45

Eye-Swage



Code	Wire Dia	A min (mm)	A max (mm)	B (mm)	C (mm)	D Min (mm)	D Max (mm)	E (inch)	G (mm)	I (mm)	J (mm)	K (mm)
RSESM03	3mm	152	220	10	5	90	160	1/4	O-Ring	7	17	17
RSESM04	4mm	154	224	10	5	90	160	1/4	O-Ring	7	17	17
RSESM05	5mm	160	235	9	10	102	177	5/16	O-Ring	7	17	20
RSESM06	6mm	200	285	14	12	124	209	7/16	5	10	21	20
RSESM07	7mm	235	330	15	12	150	245	1/2	5	15	25	25
RSESM08	8mm	245	340	15	12	154	249	1/2	5	15	25	25
RSESM0810	8mm	295	420	20	15	204	329	5/8	6	20	32	34
RSESM0910	9mm	295	415	20	15	199	329	5/8	6	20	32	34
RSESM10	10mm	295	415	20	15	199	329	5/8	6	20	32	34
RSESM1012	10mm	326	475	22	17	210	359	3/4	6	20	38	39
RSESM11	11mm	352	500	22	17	210	358	3/4	6	20	38	39
RSESM12	12mm	390	525	30	22	237	372	7/8	6	24	47	45
RSESM14	14mm	400	535	30	22	237	372	7/8	6	24	47	45

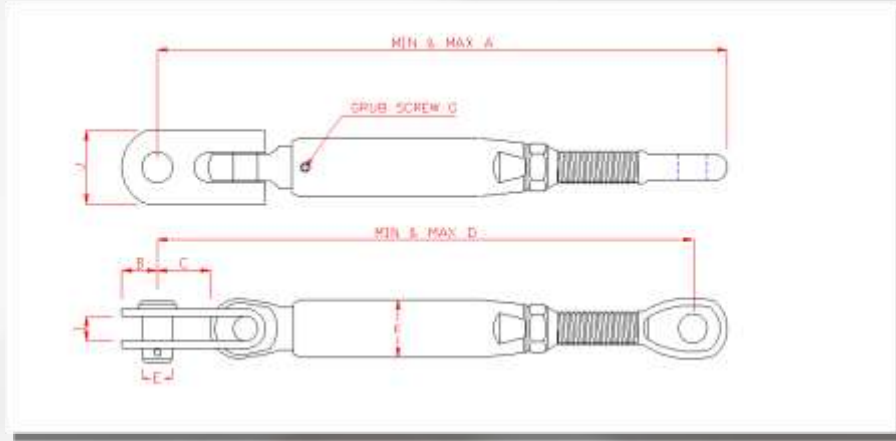
Ball Tang-Swage



Can be used with BTB (page 23)

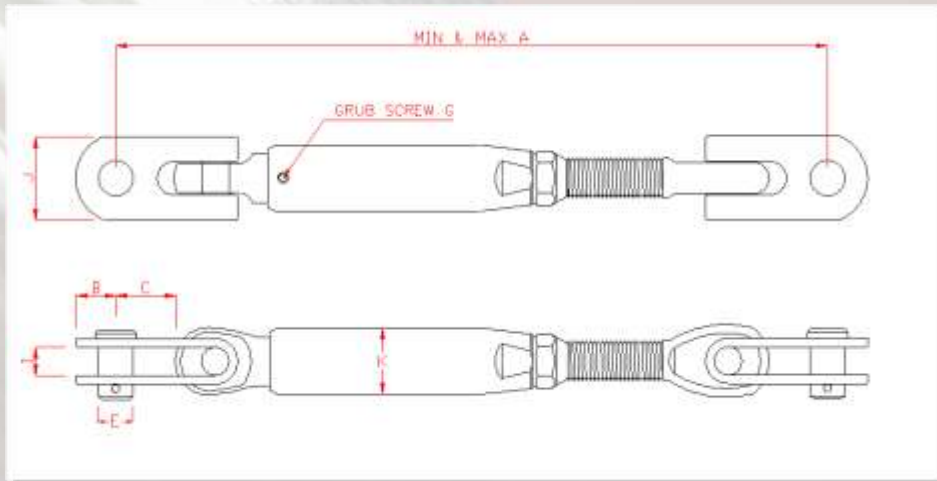
Code	Wire dia	D min(mm)	D max(mm)	F (mm)	G (mm)	H (mm)	K (mm)
RSBTS05	5mm	100	192	17	5	1/2	17
RSBTS06	6mm	128	213	19	5	1/2	21
RSBTS07	7mm	155	250	22	5	1/2	25
RSBTS08	8mm	154	249	22	5	1/2	25
RSBTS09	9mm	315	440	27	5	5/8	34
RSBTS10	10mm	315	440	27	5	5/8	34
RSBTS11	11mm	213	348	32	6	3/4	39
RSBTS12	12mm	375	510	35	6	7/8	45
RSBTS14	14mm	385	520	35	6	7/8	45

Toggle-Eye



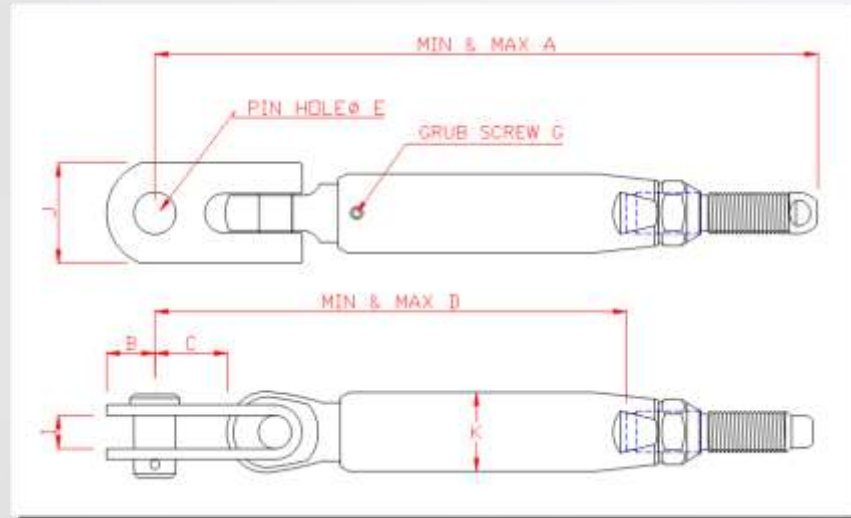
Code	Wire dia	A min (mm)	A max (mm)	B (mm)	C (mm)	E (inch)	G (mm)	I (mm)	J (mm)	K (mm)
RSTE0304	3mm	142	205	10	22	1/4	O-Ring	7	19	17
RSTE0405	4mm	142	205	10	22	1/4	O-Ring	7	19	17
RSTE0506	5mm	158	220	16	32	3/8	O-Ring	7	19	20
RSTE0607	6mm	190	270	16	34	7/16	5	10	21	20
RSTE0708	7mm	210	305	20	28	1/2	5	15	25	25
RSTE0808	8mm	210	305	20	28	1/2	5	15	25	25
RSTE0910	9mm	280	410	27	47	5/8	6	20	32	34
RSTE1010	10mm	280	410	27	47	5/8	6	20	32	34
RSTE1114	11mm	305	440	27	47	3/4	6	20	38	39
RSTE1214	12mm	335	465	32	52	7/8	6	24	38	39
RSTE1414	14mm	335	465	32	52	7/8	6	24	47	45
RSTE1616	16mm	400	570	40	57	1'	6	30	70	50

Toggle-Toggle



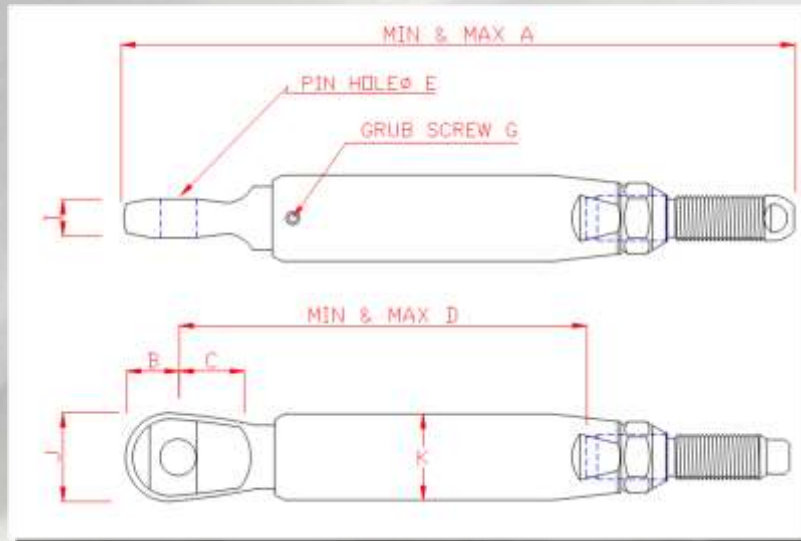
Code	Wire dia	A min(mm)	A max(mm)	B (mm)	C (mm)	E (inch)	G (mm)	I (mm)	J (mm)	K (mm)
RSTT0304	3mm	165	230	10	22	1/4	O-Ring	7	19	17
RSTT0405	4mm	165	230	10	22	1/4	O-Ring	7	19	17
RSTT0506	5mm	186	252	16	32	3/8	O-Ring	7	17	20
RSTT0607	6mm	224	304	16	34	7/16	5	10	21	20
RSTT0708	7mm	238	333	20	28	1/2	5	15	25	25
RSTT0808	8mm	238	333	20	28	1/2	5	15	25	25
RSTT0910	9mm	327	457	27	47	5/8	6	20	32	34
RSTT1010	10mm	327	457	27	47	5/8	6	20	32	34
RSTT1112	11mm	352	487	27	47	3/4	6	20	38	39
RSTT1214	12mm	387	517	32	52	7/8	6	20	38	39
RSTT1414	14mm	387	517	32	52	7/8	6	24	47	45
RSTT1616	16mm	550	700	32	52	1'	6	24	47	45

Toggle-Rod



Code	Rod	A min (mm)	A max (mm)	B (mm)	C (mm)	D min (mm)	D max (mm)	E (inch)	G (mm)	I (mm)	J (mm)	K (mm)
RSTR04	-4	134	204	12	24	66	136	1/4	O-Ring	7	17	17
RSTR06	-6	169	249	16	34	81	161	7/16	5	10	21	21
RSTR08	-8	169	249	16	34	79	159	7/16	5	10	21	21
RSTR10	-10	193	278	20	28	95	180	1/2	5	15	25	25
RSTR12	-12	193	278	20	28	95	180	1/2	5	15	25	25
RSTR15	-15	257	382	27	47	132	257	5/8	6	20	32	34
RSTR17	-17	257	382	27	47	132	257	5/8	6	20	32	34
RSTR22	-22	277	402	32	52	140	265	3/4	6	20	38	39
RSTR30	-30	307	447	32	52	140	280	7/8	6	24	47	45
RSTR40	-40	340	510	40	57	150	340	1'	6	30	70	50
RSTR48	-48	340	510	40	57	150	340	1'	6	30	70	50

Barrel Pin-Rod



Code	Rod	A Min (mm)	A Max (mm)	B (mm)	C (mm)	D Min (mm)	D Max (mm)	E (inch)	G (mm)	I (mm)	J (mm)	K (mm)
RSBPR08	-8	138	225	13	20	37	121	7/16	5	11	20	21
RSBPR10	-10	180	270	15	30	75	160	1/2	5	15	25	25
RSBPR12	-12	180	270	15	30	75	160	1/2	5	15	25	25
RSBPR15	-15	225	355	22	32	85	210	5/8	5	22	32	34
RSBPR17	-17	225	355	22	32	85	210	5/8	5	22	32	34
RSBPR22	-22	240	360	22	32	120	220	3/4	6	19	37	39
RSBPR30	-30	280	395	30	42	120	230	7/8	6	23	47	45

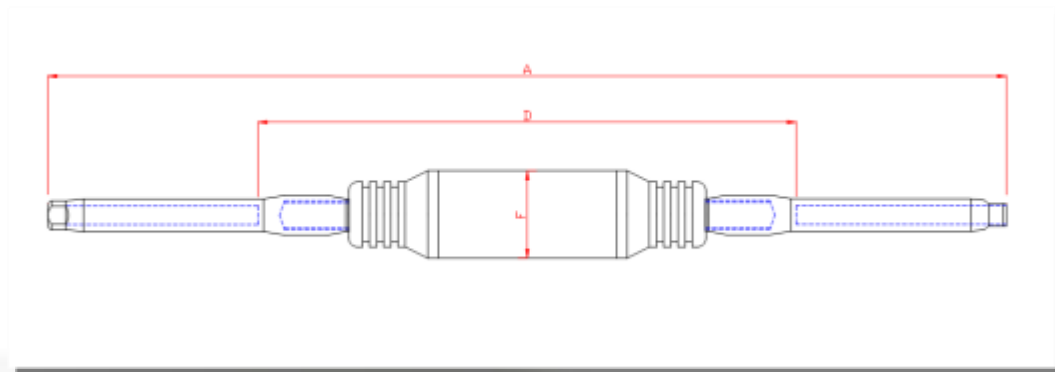
Aerial Insulators

Designed for ultimate electrical and strength characteristics SeaRig insulators deliver radio performance and improve antenna tuning.

As an integral component to the rig they are easily adapted for rod or wire use with the modular components found in the range.

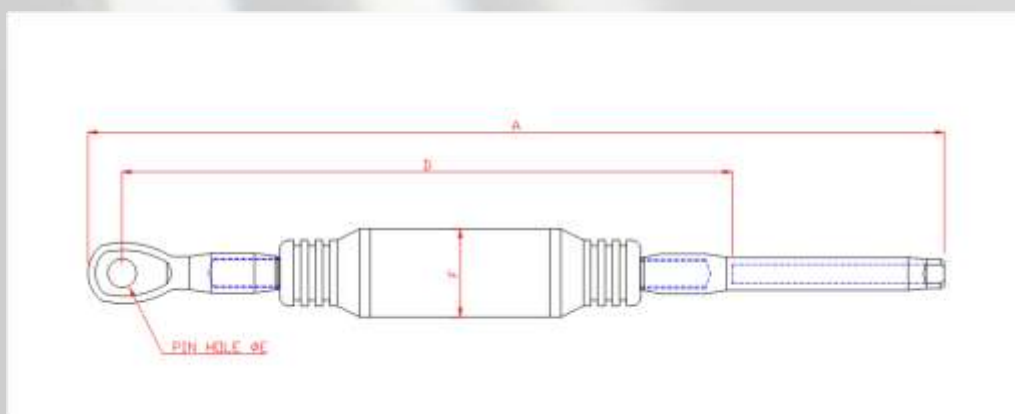
An anodised alloy body with insulating acetal ends captivate the stainless steel studs making up this maintenance free unit . Wet or dry electrical capacitance is low at even the highest transmitting power.

Swage-Swage



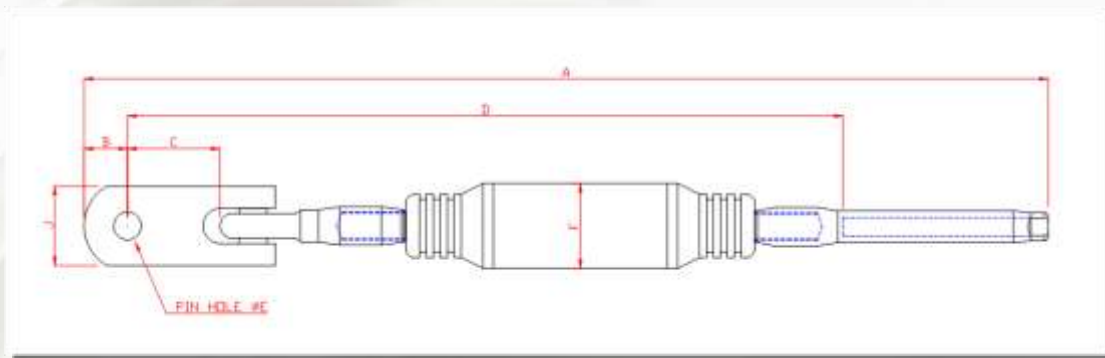
Code	Wire dia	A (mm)	D (mm)	F (mm)	BL (kg)
AISSM05	5mm	385	269	38	7545
AISSM06	6mm	409	257	38	7545
AISSM07	7mm	429	265	38	7545
AISSM08	8mm	484	304	48	9891
AISSM09	9mm	538	304	48	9891
AISSM10	10mm	538	304	48	9891
AISSM11	11mm	620	338	50	15295
AISSM12	12mm	690	388	54	18252
AISSM14	14mm	700	374	54	18252

Eye-Swage



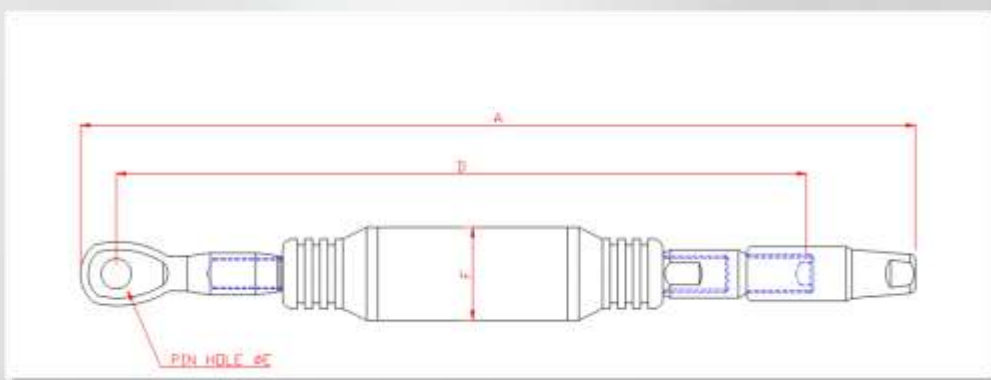
Code	Wire dia	A (mm)	D (mm)	E (inch)	F (mm)	G (mm)	H (mm)	BL (kg)
AIESM05	5mm	365	293	1/2	38	14	58	7545
AIESM06	6mm	375	284	1/2	38	14	77	7545
AIESM07	7mm	385	289	1/2	38	14	82	7545
AIESM08	8mm	440	330	5/8	48	20	90	9891
AIESM09	9mm	465	328	5/8	48	20	117	9891
AIESM10	10mm	465	328	5/8	48	20	117	9891
AIESM11	11mm	535	371	3/4	50	22	142	15295
AIESM12	12mm	585	407	7/8	54	27	151	18252
AIESM14	14mm	590	400	7/8	54	27	163	18252

Toggle-Swage



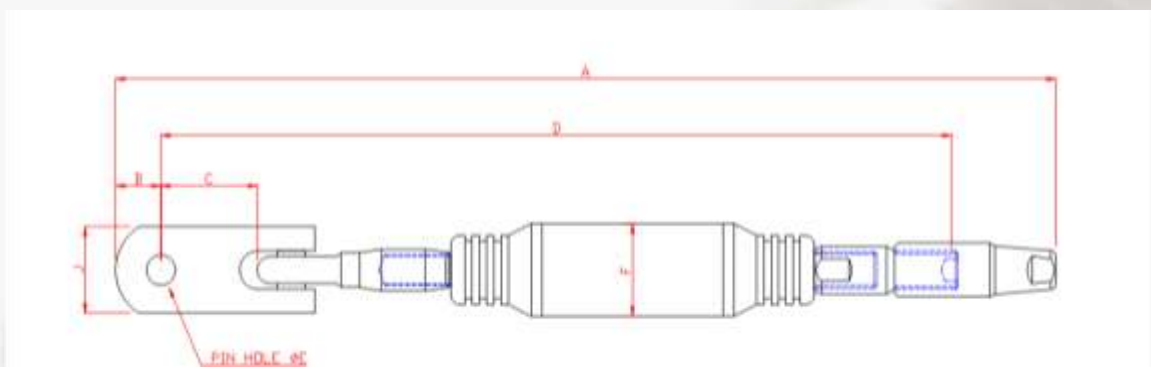
Code	Wire dia	A (mm)	B (mm)	C (mm)	D (mm)	E (inch)	F (mm)	J (mm)	BL (kg)
AITSM05	5mm	416	19	32	345	3/4	38	38	7545
AITSM06	6mm	428	19	32	363	7/16	38	38	7545
AITSM07	7mm	438	19	32	369	1/2	38	38	7545
AITSM08	8mm	516	25	50	439	5/8	48	45	9891
AITSM09	9mm	543	25	50	466	5/8	48	45	9891
AITSM10	10mm	543	25	50	466	5/8	48	45	9891
AITSM11	11mm	602	25	45	518	3/4	50	45	15295
AITSM12	12mm	671	30	55	567	7/8	54	55	18252
AITSM14	14mm	676	30	55	579	7/8	54	55	18252

Eye-Swageless



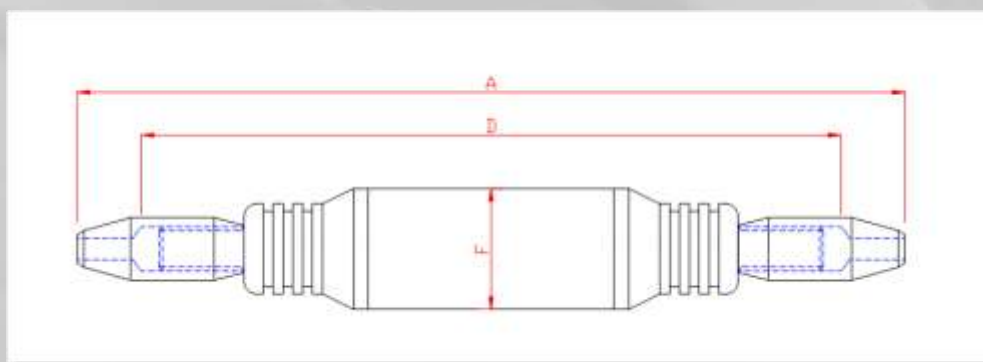
Code	Wire dia	A (mm)	D (mm)	E (inch)	F (mm)	BL (kg)
AIESLM06	6mm	351	302	1/2	38	7545
AIESLM07	7mm	358	302	1/2	38	7545
AIESLM08	8mm	405	340	5/8	48	9891
AIESLM09	9mm	422	352	5/8	48	9891
AIESLM10	10mm	422	352	5/8	48	9891
AIESLM11	11mm	473	390	3/4	50	15295
AIESLM12	12mm	517	427	7/8	54	18252
AIESLM14	14mm	540	431	7/8	54	18252

Toggle-Swageless



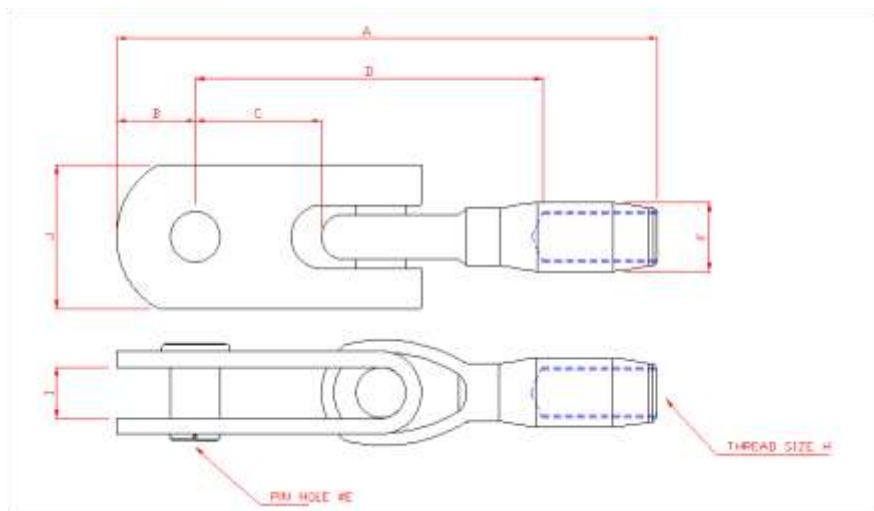
Code	Wire dia	A (mm)	B (mm)	C (mm)	D (mm)	E (inch)	F (mm)	J (mm)	BL (kg)
AITSLM06	6mm	404	19	32	322	7/16	38	38	7545
AITSLM07	7mm	411	19	32	329	1/2	38	38	7545
AITSLM08	8mm	479	25	50	384	5/8	48	45	9891
AITSLM09	9mm	501	25	50	399	5/8	48	45	9891
AITSLM10	10mm	501	25	50	399	5/8	48	45	9891
AITSLM11	11mm	540	25	45	438	3/4	50	45	15295
AITSLM12	12mm	603	30	55	480	7/8	54	55	18252
AITSLM14	14mm	626	30	55	499	7/8	54	55	18252

Rod-Rod



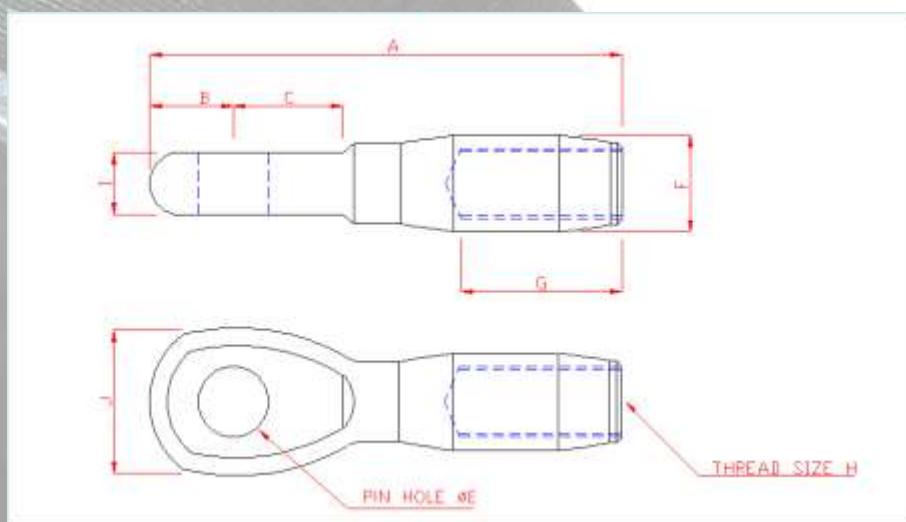
Code	Rod dia	A (mm)	D (mm)	F (mm)	BL (kg)
AIRR08	-8	263	225	38	7545
AIRR10	-10	263	225	38	7545
AIRR12	-12	320	265	48	7545
AIRR15	-15	320	265	48	9891
AIRR17	-17	320	265	48	9891
AIRR22	-22	370	295	50	15295
AIRR30	-30	400	340	53	18252

Internal Threaded Toggle



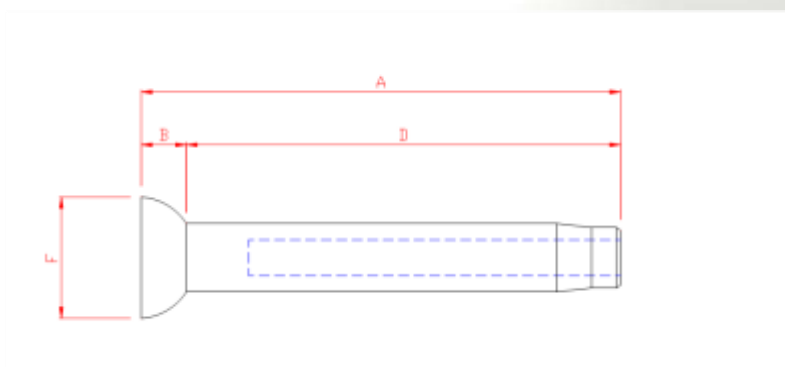
Code	Wire	A (mm)	B (mm)	C (mm)	D (mm)	E (inch)	F (mm)	H (inch)	I (mm)	J (mm)
INTHT08	5,6,7	140	20	30	93	1/2	18	1/2unf	12.7	38
INTHT10	8,9,10	175	26	50	113	5/8	22	5/8unf	16	45
INTHT12	11	180	26	50	113	3/4	27	3/4unf	19	45
INTHT14	12,14	205	32	55	127	7/8	31	7/8unf	22.2	55

Internal Threaded Eye



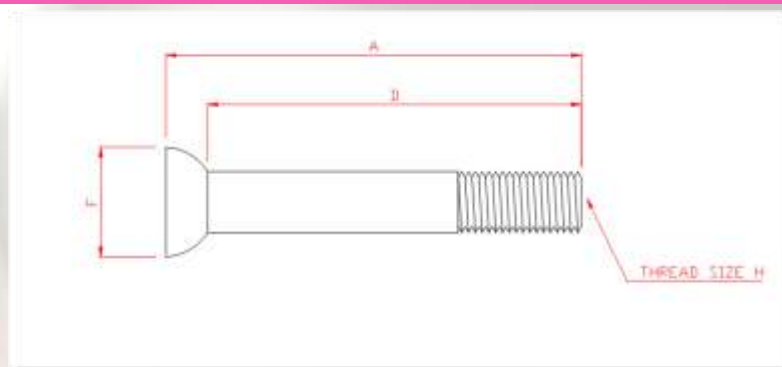
Code	Wire dia	A (mm)	B (mm)	C (mm)	E (inch)	F (mm)	G (mm)	H (inch)	I (mm)	J (mm)
INTHE08	5,6,7	90	14	22	1/2	18	27	1/2 unf	12.2	26
INTHE10	8,9,10	96	19	27	5/8	22	35	5/8 unf	14	33
INTHE12	11	110	22	29	3/4	27	41	3/4 unf	15	39
INTHE1412	12,14	120	26	31	3/4	31	45	7/8 unf	19	45
INTHE14	12, 14	120	26	31	7/8	31	45	7/8 unf	19	45

Swage



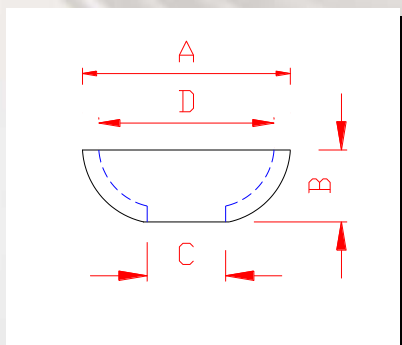
Code	Wire dia	A (mm)	B (mm)	D (mm)	F (mm)
SBSM04	4mm	76.5	10	67	20
SBSM05	5mm	79.1	10	69	20
SBSM06	6mm	80	10	78	20
SBSM07	7mm	120	10	110	22
SBSM07L	7mm	121	11	110	28
SBSM08	8mm	116.5	11	105	28
SBSM09	9mm	137	13	124	28
SBSM10	10mm	137	13	124	28
SBSM11	11mm	176	13	165	28
SBSM12	12mm	240	19	220	32

Thread



Code	Wire dia	A (mm)	D (mm)	F (mm)	H (inch)
SBTH06	5mm	65	56	17	3/8 unf
SBTH08	6,7mm	85	78	20	1/2 unf
SBTH10	8,9,10mm	110	100	28	5/8 unf
SBTH12	11mm	135	120	28	3/4 unf
SBTH14	12,14mm	150	130	31	7/8 unf

Washer



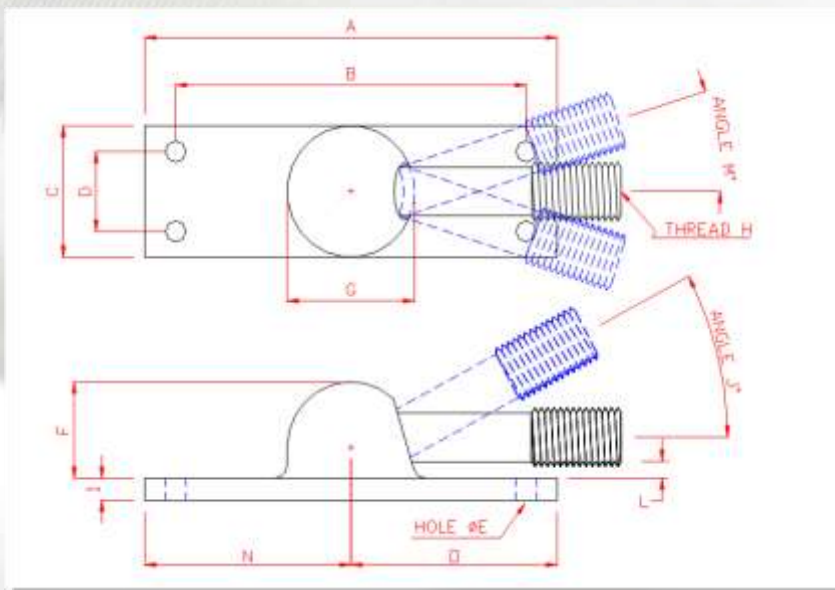
Code	A (mm)	B (mm)	C (mm)	D (mm)
SBW06	17	10	7	18
SBW07	26	12	12	22
SBW08	26	10	16	22
SBW10	34	13	20	28

Ball Tang Base

High strength cast stainless steel.



Easily installed, secure and maintenance free. Longer threaded stems are available when used with Rigging Screws.



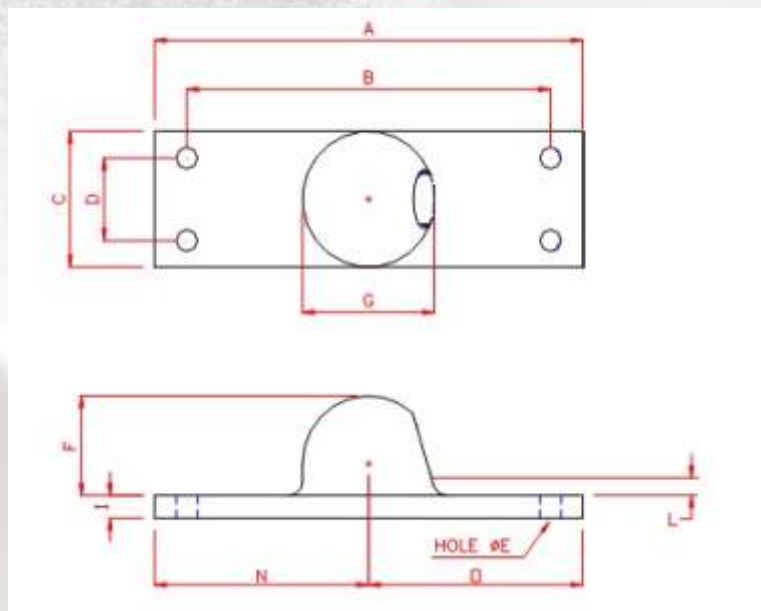
Code	Wire dia	A (mm)	B (mm)	C (mm)	D (mm)	E (mm)	F (mm)	G (mm)	H (inch)	I (mm)	J (deg)	L (mm)	M (deg)	N (mm)	O (mm)	BL (kg)
BTB08	5,6,7mm	98	83	30	19	4.8	22	32	1/2 unf	5	32	2.4	5	49	49	5120
BTB10	8,9,10mm	99	87	37	20	6.4	28	40	5/8 unf	5	36	4.2	5	49	49	9935
BTB12	11mm	150	135	42	28	5.3	35	45	3/4 unf	6	42	7	5	80	68	12591
BTB14	12,14mm	145	120	46	26	6	42	55	7/8 unf	6	42	14	5	73	72	20693

Rod Tang Base

High strength cast stainless steel.

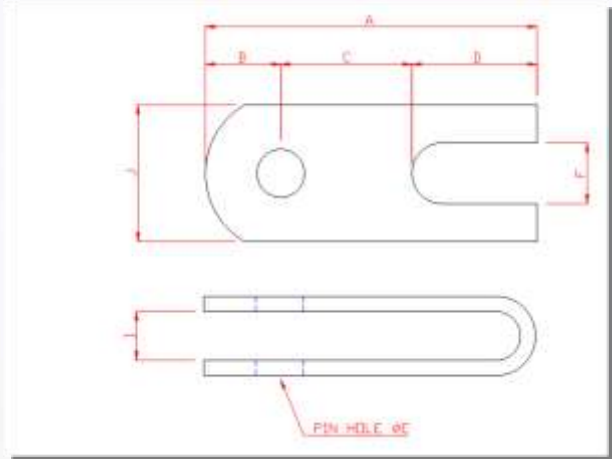


Ideal for use with GPS Rod Stems



Code	Rod	A (mm)	B (mm)	C (mm)	D (mm)	E (mm)	F (mm)	G (mm)	I (mm)	L (mm)	N (mm)	O (mm)	BL (kg)
RTB08	4,6,8,10	98	83	30	19	4.8	22	32	4.7	2.4	49	49	5120
RTB10	12,15,17	99	87	37	20	6.4	28	40	5	4.2	49	49	9935
RTB12	17,22	150	135	42	28	5.3	35	45	5-8	7	80	68	12591
RTB14	30	145	120	46	26	6	42	55	5-8	14	73	72	20693

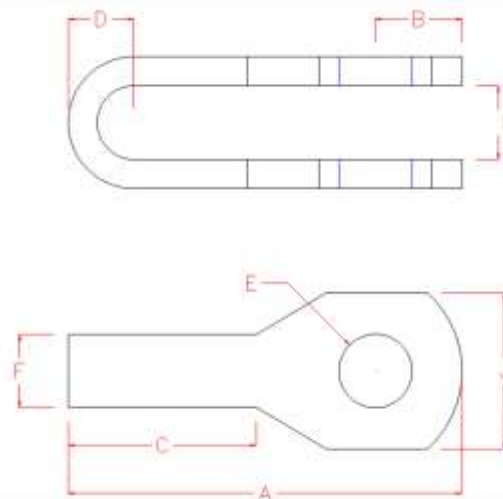
Jaw-Jaw



Optional high strength stainless steel and custom lengths are available on request.

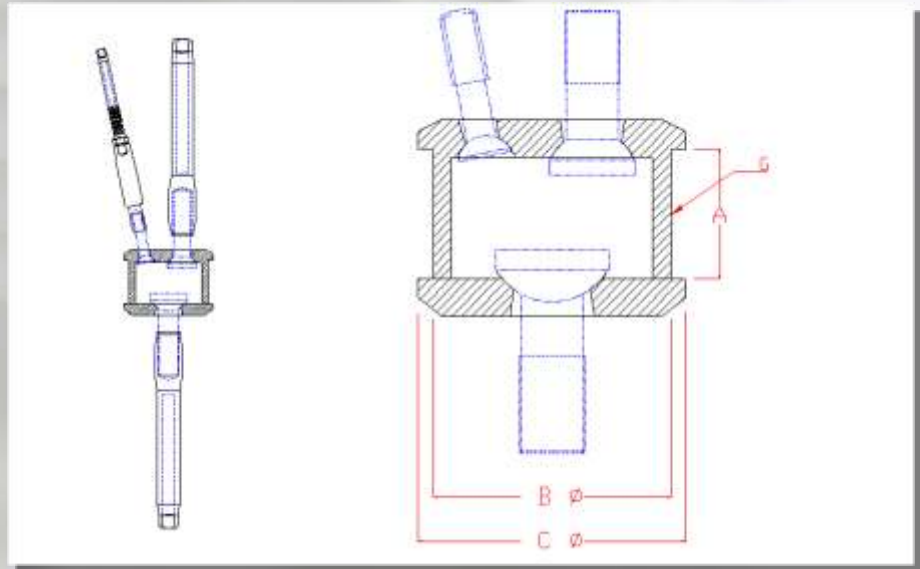
Code	Wire dia	A (mm)	B (mm)	C (mm)	D (mm)	E (mm)	F (mm)	I (mm)	J (mm)
TP0404	3mm	49	11	20	17	1/4	7	7	19
TP0405	4mm	49	11	20	17	5/16	7	7	19
TP0505	5mm	50	12	15	22	5/16	9	9	23
TP0506	5mm	50	12	15	22	3/8	9	9	23
TP0706	6mm	70	16	25	28	3/8	11	12	32
TP0707	6mm	70	16	25	28	7/16	11	12	32
TP0708	6mm	70	16	25	28	1/2	11	12	32
TP0808	7,8mm	75	20	16	38	1/2	15	13	38
TP0810	7,8mm	75	20	16	38	5/8	15	13	38
TP1010	9,10mm	110	25	45	35	5/8	15	16	45
TPW1010	10mm	110	25	45	35	5/8	20	16	45
TP1012	10mm	110	25	45	35	3/4	15	16	45
TP1212	11mm	110	25	45	35	3/4	15	20	45
TPW1212	11mm	110	25	45	35	3/4	20	20	45
TP1412	12,14mm	128	30	39	55	3/4	20	25	55
TP1414	12,14mm	128	30	39	55	7/8	20	25	55
TPW1414	12,14mm	128	30	35	55	7/8	25	25	55
TP1616	16mm	165	40	45	65	1'	28	31	70
TP2020	19,22mm	195	45	65	75	1' 1/4	38	38	80

Eye-Jaw



Code	Wire dia	A (mm)	B (mm)	C (mm)	D (mm)	E (inch)	F (mm)	I (inch)	J (mm)
TEJ07	6mm	87	15	47	13	7/16	15	1/2	26
TEJ08	7,8mm	87	15	47	13	1/2	15	1/2	26
TEJ10	9,10mm	102	19	50	16	5/8	16	5/8	32
TEJ12	11mm	115	25	55	17	3/4	20	3/4	39
TEJ14	12,14mm	135	26	55	20	7/8	23	7/8	51
TEJ16	16mm	150	30	70	23	1	28	1	51
TEJ20	19,22mm	185	35	90	25	1 1/4	29	1 1/4	65

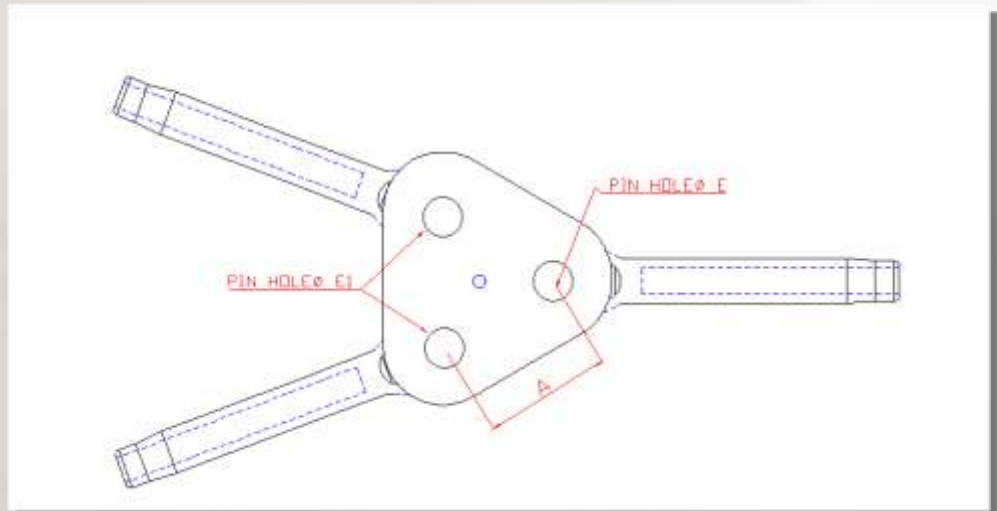
Tip Cup—Wire Terminal



Indicated wire diameter is based on lower vertical stay.

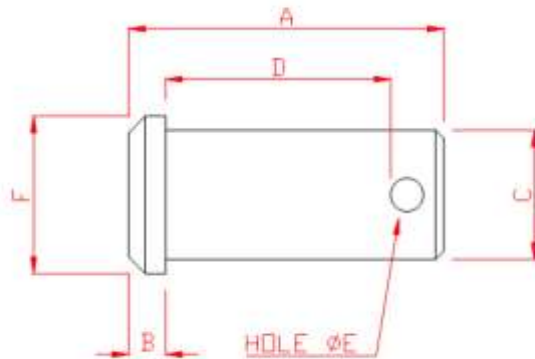
Code	Wire dia	A (mm)	B (mm)	C (mm)	G (mm)
TCW06	6	22	43	49	6
TCW07	7	22	43	49	6
TCW08	8	30	50	57	6
TCW09	9	30	50	57	6
TCW10	10	30	50	57	6
TCW11	11	35	65	73	8
TCW12	12	35	72	82	8
TCW14	14	35	72	82	8
TCW16	16	40	82	91	8

Backstay Bridal Plate



Code	Wire dia	A (mm)	E (mm)	E1 (mm)
BSP07	6mm	55	7/16	3/8
BSP08	7,8mm	55	1/2	7/16
BSP10	8,9,10mm	55	5/8	1/2
BSP12	11mm	65	3/4	5/8
BSP14	12,14mm	70	7/8	3/4

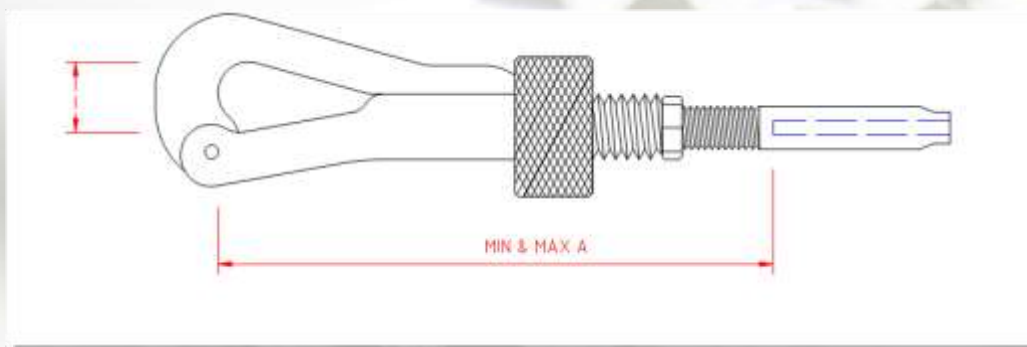
Clevis Pin



Custom diameters and lengths available on requests. Sizes refer to working length, under head to start of hole.

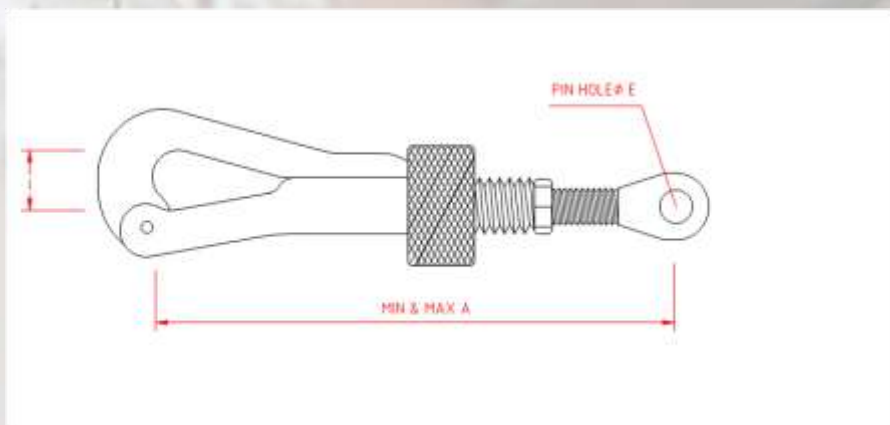
Code	A (mm)	B (mm)	C (mm)	D (mm)	E (mm)	F (mm)
CP0412	18	1.2	6.2	12	2.5	8
CP0418	24	1.2	6.2	18	2.5	8
CP0513	19	2.4	7.6	13	2.5	9.5
CP0515	22	2.8	7.6	15	2.5	9.5
CP0522	30	2.8	7.6	22	2.5	9.5
CP0616	23	3	9.2	16	3	11.1
CP0620	27	3	9.2	20	3	11.1
CP0625	34	3	9.2	25	3	11.1
CP0720	27	3	10.9	20	3	12.7
CP0725	34	3	10.9	25	3	12.7
CP0732	41	3	10.9	32	3	12.7
CP0820	29	3.2	12.6	20	3.5	15.8
CP0823	32	3.2	12.6	23	3.5	15.8
CP0825	34	3.2	12.6	25	3.5	15.8
CP0828	37	3.2	12.6	28	3.5	15.8
CP0832	41	3.2	12.6	32	3.5	15.8
CP0838	47	3.2	12.6	38	3.5	15.8
CP1024	35	4	15.6	24	4	19
CP1028	39	4	15.6	28	4	19
CP1032	41	4	15.6	32	4	19
CP1047	61	4	15.6	47	4	19
CP1230	42	5	18.8	30	5	22.2
CP1233	46	5	18.8	33	5	22.2
CP1238	49	5	18.8	38	5	22.2
CP1247	61	5	18.8	47	5	22.2
CP1438	49	5	22	38	5	25.4
CP1445	57	5	22	45	5	25.4
CP1450	65	5	22	50	5	25.4
CP1655	67	6.4	25.2	55	6	32
CP1660	71	6.4	25.2	60	6	32

Swage



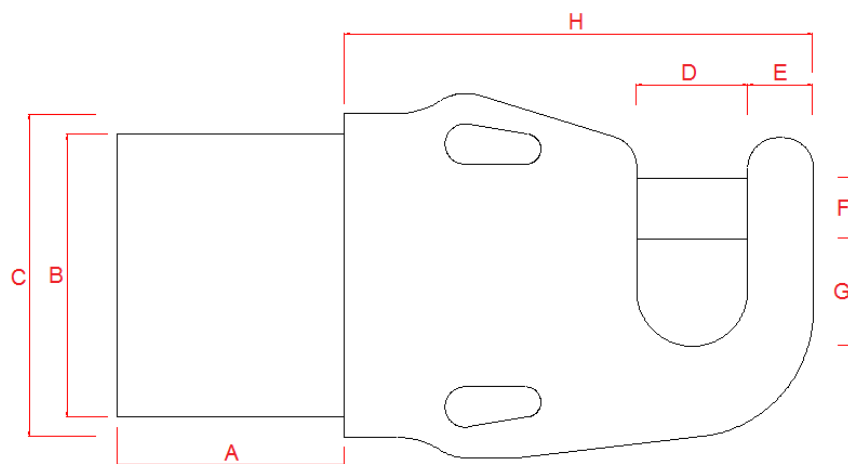
Code	Wire dia	A min (mm)	A max (mm)	I (mm)
PCSM03	3	75	100	9
PCSM04	4	75	100	9
PCSM05	5	95	130	14

Eye



Code	Wire dia	A min (mm)	A max (mm)	E (inch)	I (mm)
PCE03	3	85	115	1/4	9
PCE04	4	85	115	1/4	9
PCE05	5	105	140	5/16	14

Spinnaker Pole End



Material—Hard anodised alloy

Features—Internal auto release, lightweight

Comments—Highly aesthetic, trips on demand

Code	A (mm)	B (mm)	C (mm)	D (mm)	E (mm)	F (mm)	G (mm)	H (mm)	Weight (g)
ARL	45	56	64	22	13	12	22	91	486
AR3	45	70	82	22	13	12	22	100	492



Customised Solutions

Not everything needs to be uniquely custom, but when it does demand SeaRig. With expert designers, powerful Finite Element Analysis software and use of the highest quality materials, we deliver exceptional custom components .

Whether you require a high performance part or just a component we pride ourselves on understanding the needs of each.

SeaRig hardware is not just limited to marine applications either. Our products are widely used in Civil Engineering applications too.



From the Americas Cup to Civil Engineering, SeaRig hardware it all.



Flying sails have become the chosen alternative to a fixed stay sail, offering greater flexibility to optimising vessel performance in differing wind angle and speed.

They are not intended as a reefing system, they hoist on a conventional halyard, are tensioned at the halyard or the lower unit at the deck, and are easily deployed. A fixed length flexible stay connects the head unit to the lower drum. When the furler is rotated, this transfers the torque to the head unit along with the sail. The sail is lashed out tight to this stay at the head and tack. The integrity of the stay in avoiding stretch is the key to this systems success. Sag which is normally experienced is minimized by over tensioning the halyard to higher than normal loads. Deck hardware and mast fittings therefore need to be sized to suit.

Our features include :

- Ease of operation
- Maintenance free
- Hard anodized surface
- Quick release pins for sail changes
- Light weigh high strength components
- Use with tack plate or stay end termination
- Protective guard to avoid damage to the drum
- Adaptable to most stay manufacturers terminations
- Rope peeler to avoid over run of furling line during high speed deployment
- A lock option to hold the sail secure prior to deploying once the furling line has been removed
- Ability to build the system around your specific needs

#4 - STAYSAIL

Continuous line with lock
Weight 1.050kg



#4 - SINGLE LINE

Weight 0.896kg



#6 - DRUM 2:1

Single line
Weight 2.003kg



#6 - PERMANENT

Fixed stay, strap toggle



#10 - 3:1

Continuous line with lock
Integrated 3:1 friction block
Weight 3.185kg



#10 - HEAD SWIVEL

Eye, Fork, 2:1 options
Weight 1.508kg



#4 - CLIP

Continuous line
Tylaska T12
Weight 1.635kg



To suit luff cables or sail rings

Easily controlled lock options

Custom options available to suit

Lightweight, race bred technology

Quick clip pin release for fast changes

Units are coded as SWL in tonnes

CODE SIZES CONVERTER

Conversions	
Imp	Metric
1/8	3.17
5/32	3.96
3/16	4.76
7/32	5.55
1/4	6.35
9/32	7.14
5/16	7.93
3/8	9.52
7/16	11.1
1/2	12.7
9/16	14.28
5/8	15.875
3/4	19.05
7/8	22.2
1"	25.4
1 1/8	28.57
1 1/4	31.75
1 3/8	34.92
1 1/2	38.1
1 5/8	41.278
1 3/4	44.45
1 7/8	47.625

Rigging screws	
Thread Size	Code
1/8	2
1/4	4
5/16	5
3/8	6
7/16	7
1/2	8
9/16	9
5/8	10
3/4	12
7/8	14
1	16
1 1/8	18
1 1/4	20
1 3/8	22
1 1/2	24
1 3/4	28

Clevis pins	
Size	Code
1/8	2
1/4	4
5/16	5
3/8	6
7/16	7
1/2	8
9/16	9
5/8	10
3/4	12
7/8	14
1	16
1 1/8	18
1 1/4	20
1 3/8	22
1 1/2	24
1 3/4	28

Swages / Dies	
Wire	Code
1/8	4
5/32	5
3/16	6
7/32	7
1/4	8
9/32	9
5/16	10
3/8	12
7/16	14
1/2	16
9/16	18
5/8	20
3/4	24
7/8	28
1	32
1 1/8	36

NOTES :





Every effort has been made to ensure the accuracy of the information contained in this catalogue at the time of printing. As part of our ongoing commitment to provide you with the best available product, we reserve the right to change product specifications and options without prior notice. We will not accept responsibility for specification errors or omissions.

We appreciate support in your advise of any errors found.

Distributed in Australia by
ARCUS AUSTRALIA